

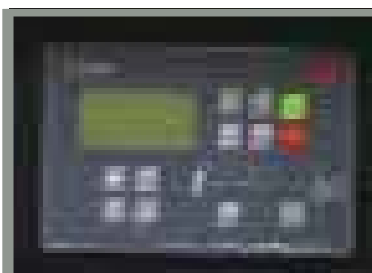
# GSW SERIES

## ENERGY FOR PUBLIC AND INDUSTRIAL USES

The GSW series is available with a range of accessories providing a versatile solution to a variety of applications.

This family of generators offers the best performance under the most difficult and variable operating conditions.

Ideal for major industrial areas that need an extra power source.



Availability of different cubicle solutions



Long autonomy fuel tanks



Moving and rotating parts protection



Set of documentation available

GENERATING SET	G5W65p <sup>(1)</sup>	G5W80d	G5W80p <sup>(1)</sup>	G5W110d	G5W110p	G5W150d
STAND BY POWER LTP kW/kVA	50,4/63,0	62,8/78,5	64,0/80,0	86,5/108,1	88,0/110,0	113,6/142,0
PRIME POWER PRP kW/kVA	47,7/59,6	59,3/74,1	61,6/77,0	82,0/102,5	80,1/100,1	102,6/128,2
VOLTAGE Volt / FREQUENCY Hz	400 / 50	400 / 50	400 / 50	400 / 50	400 / 50	400 / 50
PHASES	3	3	3	3	3	3
<b>ENGINE</b>						
BRAND	Perkins	Deutz	Perkins	Deutz	Perkins	Deutz
MODEL	1103A-33TG2	BF4M2012C	1104A-44TG2	BF4M1013EC	1104C-44TAG2	BF4M1013FC
COOLING SYSTEM	Water	Water	Water	Water	Water	Water
FUEL	Diesel	Diesel	Diesel	Diesel	Diesel	Diesel
NUMBER AND DISPOSITION OF CYLINDERS	3 in line	4 in line	4 in line	4 in line	4 in line	4 in line
DISPLACEMENT cc	3300	4040	4400	4760	4410	4760
ASPIRATION	Turbo	Turbo, CAC	Turbo	Turbo, CAC	Turbo, CAC	Turbo, CAC
STARTING SYSTEM / ELECTRIC CIRCUIT (volt)	Electric / 12	Electric / 12	Electric / 12	Electric / 12	Electric / 12	Electric / 12
SPEED rpm	1500	1500	1500	1500	1500	1500
SPEED GOVERNOR	Mechanical	Mechanical	Mechanical	Mechanical	Electronic	Electronic
STAND BY POWER LTP kW	59,3	70,0	79,1	96,1	98,0	124,0
PRIME POWER PRP kW	53,8	66,1	71,9	91,1	89,0	112,0
FUEL CONSUMPTION at 75% / 100% PRP L/h	10,5 / 14,0	12,8 / 17,1	14,1 / 18,7	17,2 / 23,0	16,9 / 22,6	21,0 / 28,0
<b>ALTERNATOR</b>						
TYPE	brushless	brushless	brushless	brushless	brushless	brushless
POLES	4	4	4	4	4	4
VOLTAGE REGULATION SYSTEM	Electronic	Electronic	Electronic	Electronic	Electronic	Electronic
<b>OVERALL DIMENSIONS AND WEIGHT</b>						
LENGTH mm	2200	2200	2200	2200	2200	2200
WIDTH mm	1000	1000	1000	1000	1000	1000
HEIGHT mm	1620	1743	1620	1620	1620	1650
WEIGHT Kg	833	906	896	1326	1002	1412
FUEL TANK CAPACITY L	240	243	240	240	240	240
RUNNING TIME at 75% / 100% PRP h	22,8 / 17,1	19,0 / 14,2	17,0 / 12,8	13,9 / 10,4	14,2 / 10,6	11,4 / 8,5

(1) This Generator is normally intended to be used for stationary application only. In this case, its engine would not have to comply with EU 97/68/EC Stage II (EU2007) Directive (no need for subsequent modifications and/or integrations).



GENERATING SET	GSW170d	GSW195d	GSW220d	GSW275d	GSW530d	GSW560d
STAND BY POWER LTP kW/kVA	134,3/167,8	155,2/194,0	176,0/220,0	220,0/275,0	422,3/527,8	436,8/546,0
PRIME POWER PRP kW/kVA	127,8/159,8	146,4/183,1	163,6/204,6	203,0/253,7	367,4/459,3	407,4/509,3
VOLTAGE Volt / FREQUENCY Hz	400 / 50	400 / 50	400 / 50	400 / 50	400 / 50	400 / 50
PHASES	3	3	3	3	3	3
<b>ENGINE</b>						
BRAND	Deutz	Deutz	Deutz	Deutz	Deutz	Deutz
MODEL	BF6M1013EC	BF6M1013FC G1	BF6M1013FC G2	TCD2013L06	BF8M1015C G2	BF8M1015CP
COOLING SYSTEM	Water	Water	Water	Water	Water	Water
FUEL	Diesel	Diesel	Diesel	Diesel	Diesel	Diesel
NUMBER AND DISPOSITION OF CYLINDERS	6 in line	6 in line	6 in line	6 in line	8 V	8 V
DISPLACEMENT cc	7150	7150	7150	7150	15900	15900
ASPIRATION	Turbo, CAC	Turbo, CAC	Turbo, CAC	Turbo, CAC	Turbo, CAC	Turbo, CAC
STARTING SYSTEM / ELECTRIC CIRCUIT (volt)	Electric / 12	Electric / 12	Electric / 12	Electric / 24	Electric / 24	Electric / 24
SPEED rpm	1500	1500	1500	1500	1500	1500
SPEED GOVERNOR	Mechanical	Electronic	Electronic	Electronic	Electronic	Electronic
STAND BY POWER LTP kW	145,8	175,8	193,8	238,0	449,7	475,9
PRIME POWER PRP kW	138,8	158,8	175,8	215,0	391,3	433,9
FUEL CONSUMPTION at 75% / 100% PRP L/h	25,9 / 34,5	29,5 / 39,3	33,3 / 44,4	38,4 / 51,2	72,3 / 96,4	85,6 / 114,2
<b>ALTERNATOR</b>						
TYPE	brushless	brushless	brushless	brushless	brushless	brushless
POLES	4	4	4	4	4	4
VOLTAGE REGULATION SYSTEM	Electronic	Electronic	Electronic	Electronic	Electronic	Electronic
<b>OVERALL DIMENSIONS AND WEIGHT</b>						
LENGTH mm	2600	2650	2650	2650	3300	3300
WIDTH mm	1000	1100	1100	1180	1800	1800
HEIGHT mm	1620	1965	1965	1844	2135	2135
WEIGHT Kg	1615	1980	2026	2326	3595	3595
FUEL TANK CAPACITY L	250	400	400	400	636	636
RUNNING TIME at 75% / 100% PRP h	9,6 / 7,2	13,6 / 10,2	12,1 / 9,1	10,4 / 7,8	8,8 / 6,6	7,4 / 5,6

# GSW SERIES

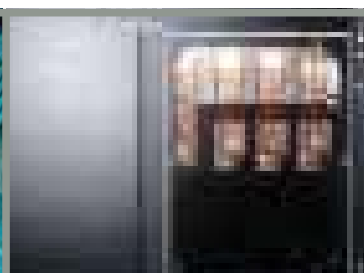
## POWER IN ISOLATION

A continuous power supply, provided with high power output and extended running time, makes this range of generators the most suitable for powering sites not connected to a mains power supply.

This range is also ideal for running lighting systems during power failures.



Well balanced engine block 6 in line cylinders



Terminal board load connection



GENERATING SET	G5W275V	G5W330V	G5W415V	G5W450V	G5W510V	G5W560V	G5W590V	G5W630v
STAND BY POWER LTP kW/kVA	220,0/275,0	264,0/330,0	331,0/413,7	350,0/437,0	404,7/505,9	436,8/546,0	480,8/601,0	505,4/631,8
PRIME POWER PRP kW/kVA	198,9/248,7	252,0/315,0	302,0/377,5	329,0/411,4	364,3/455,4	403,7/504,7	456,9/571,0	457,4/571,7
VOLTAGE Volt / FREQUENCY Hz	400 / 50	400 / 50	400 / 50	400 / 50	400 / 50	400 / 50	400 / 50	400 / 50
PHASES	3	3	3	3	3	3	3	3
<b>ENGINE</b>								
BRAND	Volvo	Volvo	Volvo	Volvo	Volvo	Volvo	Volvo	Volvo
MODEL	TAD734GE	TAD941GE	TAD1241GE	TAD1242GE	TAD1345GE	TAD1641GE	TAD1642GE	TAD1642GE
COOLING SYSTEM	Water	Water	Water	Water	Water	Water	Water	Water
FUEL	Diesel	Diesel	Diesel	Diesel	Diesel	Diesel	Diesel	Diesel
NUMBER AND DISPOSITION OF CYLINDERS	6 in line	6 in line	6 in line	6 in line	6 in line	6 in line	6 in line	6 in line
DISPLACEMENT cc	7150	9360	12130	12130	12780	16120	16120	16120
ASPIRATION	Turbo, CAC	Turbo, CAC	Turbo, CAC	Turbo, CAC	Turbo, CAC	Turbo, CAC	Turbo, CAC	Turbo, CAC
STARTING SYSTEM / ELECTRIC CIRCUIT (volt)	Electric / 24	Electric / 24	Electric / 24	Electric / 24	Electric / 24	Electric / 24	Electric / 24	Electric / 24
SPEED rpm	1500	1500	1500	1500	1500	1500	1500	1500
SPEED GOVERNOR	Electronic	Electronic	Electronic	Electronic	Electronic	Electronic	Electronic	Electronic
STAND BY POWER LTP kW	238,0	310,0	354	387	431	473	536	536
PRIME POWER PRP kW	213,0	281,0	323	352	388	430	485	485
FUEL CONSUMPTION at 75% / 100% PRP L/h	38,8 / 51,7	48,5 / 64,6	57,1 / 76,1	62,5 / 83,4	67,9 / 90,5	76,0 / 101,4	87,1 / 116,1	87,04 / 116,05
<b>ALTERNATOR</b>								
TYPE	brushless	brushless	brushless	brushless	brushless	brushless	brushless	brushless
POLES	4	4	4	4	4	4	4	4
VOLTAGE REGULATION SYSTEM	Electronic	Electronic	Electronic	Electronic	Electronic	Electronic	Electronic	Electronic
<b>OVERALL DIMENSIONS AND WEIGHT</b>								
LENGTH mm	2650	3300	3300	3300	3300	3500	3500	3500
WIDTH mm	1180	1400	1400	1400	1460	1500	1500	1500
HEIGHT mm	1844	1887	1917	1917	1965	2120	2120	2120
WEIGHT Kg	2326	2580	3050	3050	3591	3620	3803	3863
FUEL TANK CAPACITY L	400	636	636	636	636	636	636	636
RUNNING TIME at 75% / 100% PRP h	10,3 / 7,7	13,1 / 9,8	11,1 / 8,3	10,2 / 7,6	9,3 / 7,0	8,4 / 6,3	7,3 / 5,5	7,3 / 5,5